



SUPERIOR CLEANING &  
RELIABLE PERFORMANCE

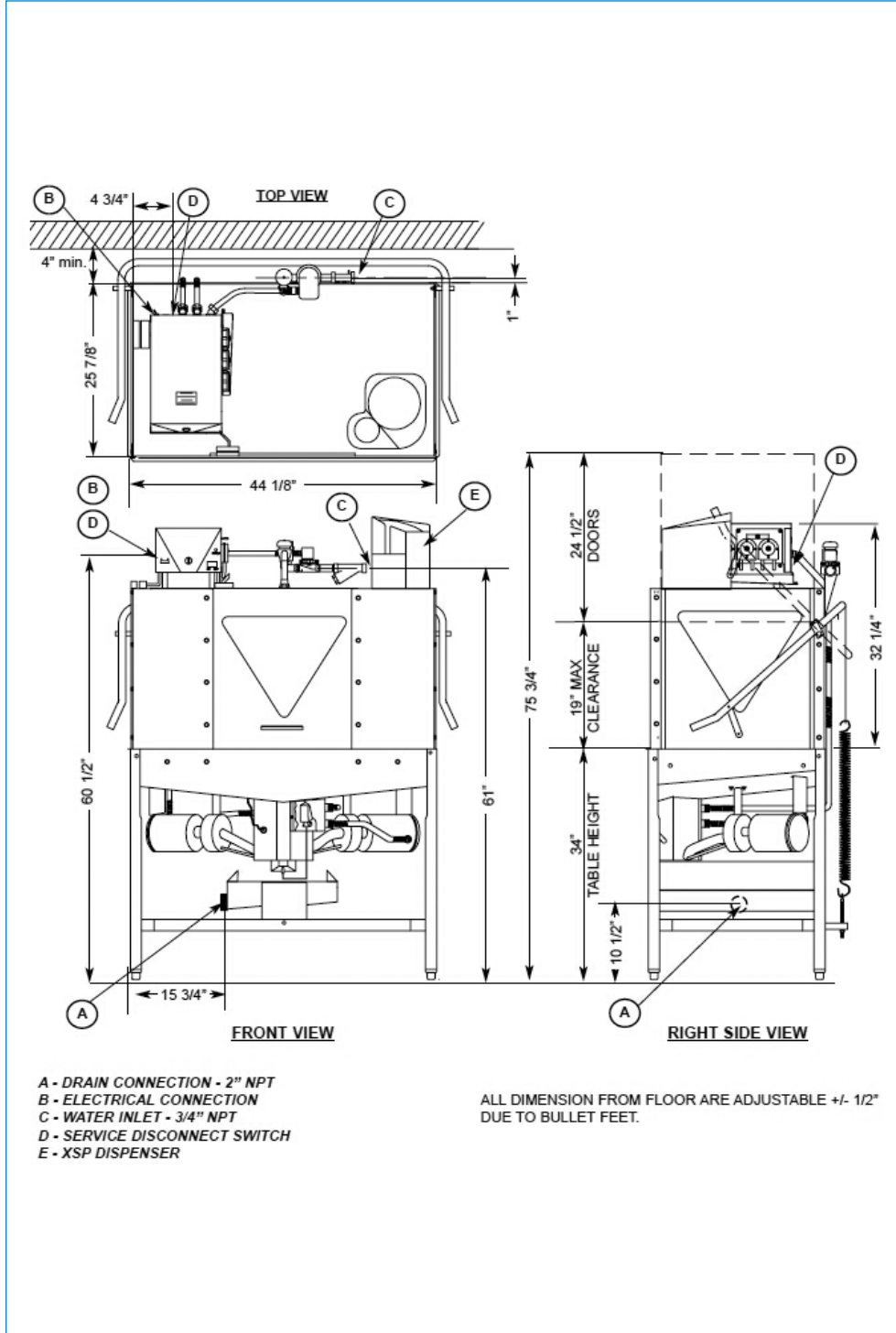
## ES-4000 DISHMACHINE

- ▲ Low temperature, Energy Star® machine helps reduce operating costs
- ▲ Self-cleaning internal sump helps ensure a clean final rinse
- ▲ Unique design helps ensure uncontaminated water is used in every cycle

Leasing a dishmachine from Ecolab allows you to focus on your business with the security of knowing your warewashing operation is properly managed.



# Superior Results, 24-7 Service & A Great Financial Option.



## ES-4000 SPECIFICATIONS:

### OPERATING CAPACITY

Racks per Hour 78

### OPERATING CYCLE (LIGHT)

Total Cycle Time 77

### OPERATING CYCLE (NORMAL)

Wash Time 53  
 Dwell Time 20  
 Rinse Time 14  
 Load Time 5  
 Total Cycle Time 92

### OPERATING TEMPERATURES

Wash (minimum) 120° F  
 Sanitizing Rinse (min) 120° F

### WATER CONSUMPTION

Gallons per Rack 1.17

### ELECTRICAL RATINGS

Wash Pump 3/4 hp

### WASH CHAMBER

Height 17"

### WEIGHT

Machine Weight 310 lbs

### UTILITY REQUIREMENTS ELECTRICAL

Voltage/Frequency/Phase:  
 115V/60Hz/1 Ph  
 Total Amperage 23 A  
 Minimum Electrical Circuit 30 A

### WATER

Waterline Size (min) 3/4"  
 Flow Pressure (required) 15-25 psi  
 Incoming Temperature (min) 120° F  
 Incoming Temperature (recommended) 140° F

### DRAIN

Drainline Size (minimum) 2"

