

Ecolab® Disinfectant 1 Wipe With Plastic-Free Wipes¹

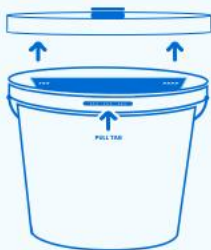
Instructions for Use - Bucket and Refill Bag



A

Preparing New (Unused) Bucket with Bag Inside

1

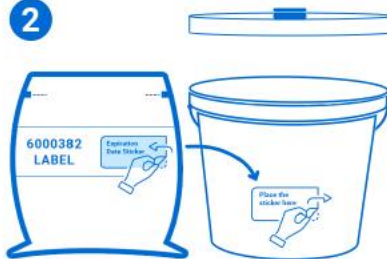


**Remove lid
from bucket**

Remove pull tab from lid. Place fingers in lid notch & lift up to remove lid.

Optional

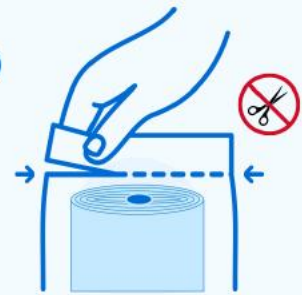
2



**Transfer bag label
to bucket**

1. Locate peel-away sticker with expiration date on refill bag label. Remove sticker.
2. Place sticker on outside of bucket.

3



**Open wipe bag
inside the bucket**

Locate tear notch on either side of bag & tear straight across to open.

4



**Prepare first wipe
from roll**

From center of roll, pull first wipe upwards. **Keep wipe bag in bucket.**

Do not
remove
wipe roll
from bag.

5



**Pull wipe
through lid**

Open nozzle cover in center of lid. With bucket lid removed, insert corner of first wipe through bottom of lid nozzle.

Do not push
finger into
nozzle.

6



**Place lid back
on bucket**

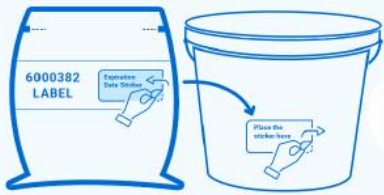
Replace lid. Pull out first wipe & tear off at angle. Use wipes according to label instructions.

Keep nozzle cover
& lid sealed when
not in use.

B

Reloading Existing Bucket With Refill Bag

Optional

1

Transfer bag label to bucket

1. Locate peel-away sticker with expiration date on refill bag label. Remove sticker.
2. Place sticker on outside of bucket.

2

Place bag inside bucket

Place fingers in lid notch & lift up to remove lid.

3

Open wipe bag inside the bucket

Locate tear notch on either side of bag & tear straight across to open.

4

Prepare first wipe from roll

From center of roll, pull first wipe upwards. **Keep wipe bag in bucket.**

Do not remove wipe roll from bag.

5

Pull wipe through lid

Open nozzle cover in center of lid. With bucket lid removed, insert corner of first wipe through bottom of lid nozzle.

Do not push finger into nozzle.

6

Place lid back on bucket

Replace lid. Pull out first wipe & tear off at angle. Use wipes according to label instructions.

Keep nozzle cover & lid sealed when not in use.

C Tips For Using The Wipe – F.A.S.T

FOLD The Wipe

Folding the wipe, especially when cleaning large surfaces, can be helpful.²

Apply Pressure

Apply good pressure while wiping the surface to release disinfectant from the absorbent wipe.

Saturate the Surface

Wet the surface until visibly saturated.

Time to disinfect

Keep the surface wet for the 1-minute contact time to effectively disinfect.¹



D

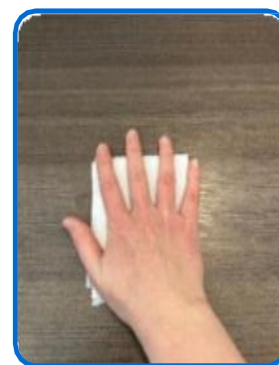
Fold Examples

Two folding options can be chosen based on user/facility preference.

1/2 Fold: Fold the 8"x10" wipe in half. Per CDC guidance, regularly rotate and unfold the wipe to use all of the sides.



1/4 Fold: Fold 8"x10" wipe in half and then in half again, creating a wipe that's 1/4 of its original size. Per CDC guidance, regularly rotate and unfold the wipe to use all of the sides.



Did you know? Each year, **plastic wipes circle the globe 58 times** from North American Healthcare facilities alone.³



1. Wipe material is plastic-free (packaging made of plastic: bucket, refill bag). EPA Reg. No. 1677-263. Kills 40+ organisms in 60 seconds and kills *C. auris* and *T. interdigitale* in 75 seconds. Refer to product label for full organism listing and use directions.
2. Per CDC guidance, regularly rotate and unfold the wipe to use all sides (CDC Best Practices for Environmental Cleaning in Global Healthcare Setting, March 19 2024).
3. Based on DRG 2023 healthcare disinfecting wipes sales data at the individual SKU level. Multiplying the total wipes sold by SKU x the wipe length of the individual SKUs. Divided the total length by the circumference of the earth.