

LOW WATER CONVEYOR DISHMACHINE DUAL RATED FOR HIGH AND LOW TEMPERATURE OPERATIONS

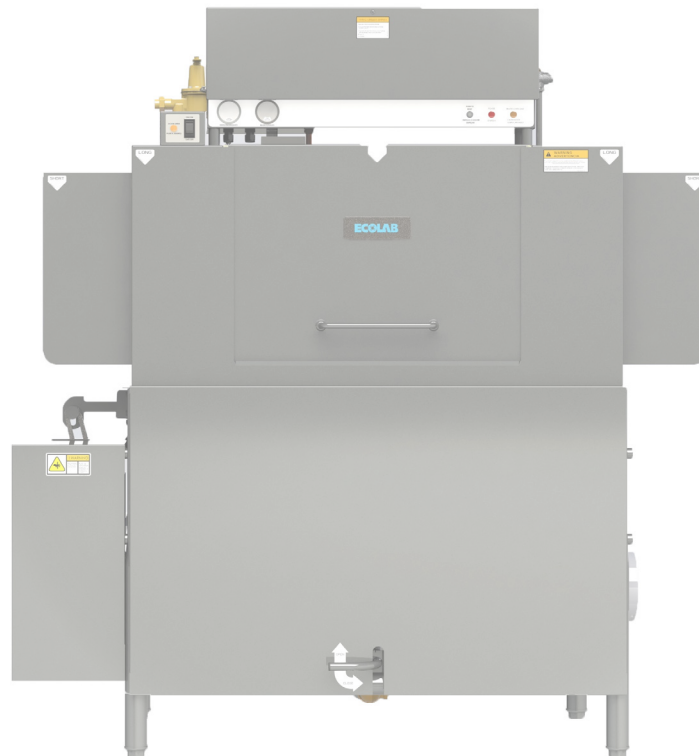
EC-LW Conveyor Dishmachine

- ▲ NSF certified 0.62 gals/rack provides one-pass wash results with water and energy efficiency.
- ▲ Free-flow wash intake inhibits clogging, improves performance, reduces maintenance.
- ▲ 44" and 66" sizes available with High Hood and Sideloader options to configure for your needs.

.....

Renting a dishmachine from Ecolab allows you to focus on your business with the security of knowing your warewashing operation is properly managed.

.....



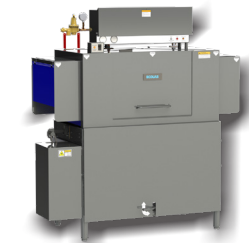
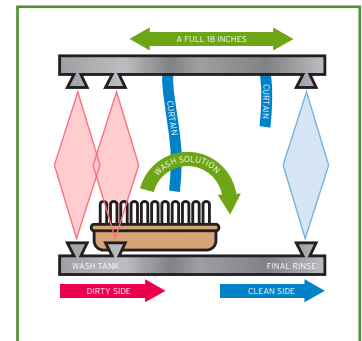
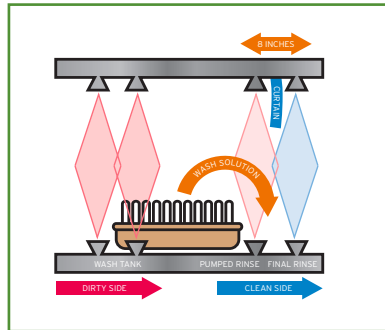
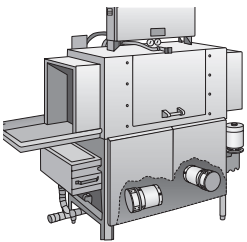
EC-LW Conveyor Dishmachine Saves Water and Conserves Energy

PROBLEM:

- ▲ 66" dishmachine design forced into 44" cabinet.
- ▲ Wash solution gets re-deposited into pumped rinse tank.
- ▲ Dish racks move so quickly that wash solution doesn't have time or distance to fall back into the main wash tank.
- ▲ Only 8" separating newly detergent charged pumped rinse tank from final rinse.

SOLUTION:

- ▲ Ecolab's EC-44 conveyor is designed as a 44" dishmachine with 18" of wash and rinse separation.
- ▲ Offers sufficient fall back for wash detergent.
- ▲ S.S. pump and impeller assembly, 2hp wash pump motor.



44" Conveyor
EC44-LW, EC44HH-LW



66" Conveyor
EC66-LW, EC66HH-LW

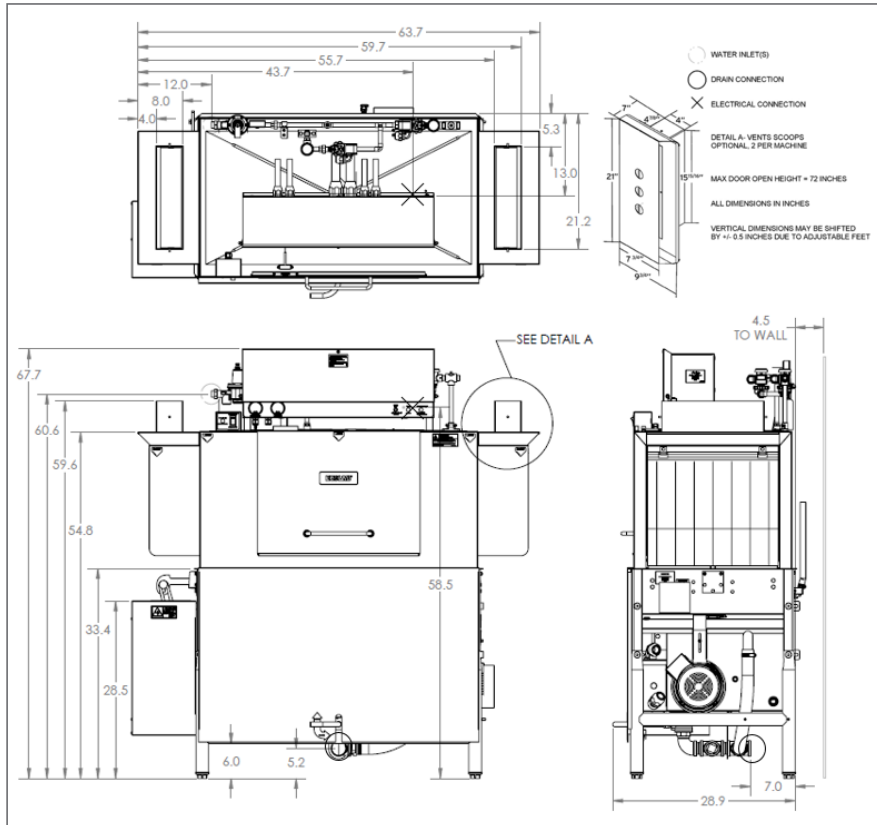
EC-LW Conveyor Dishmachine Features

- ▲ NSF certified 0.62 gals/rack provides one-pass wash results with water and energy efficiency.
- ▲ Free-Flow wash intake inhibits clogging, improves performance, reduces maintenance.
- ▲ Separation of wash and rinse sections helps prevent water contamination in the final rinse.
- ▲ High throughput of up to 244 racks per hour provides fast results.
- ▲ Extended 18" wash section provides consistent results.
- ▲ 66" Conveyor offer all the benefits of the 44", and adds pre-wash section to remove heavy soil and deposits.
- ▲ High Hood configuration offers 25" clearance in wash chamber.
- ▲ Sideloader option allows for placement in tight corner locations.

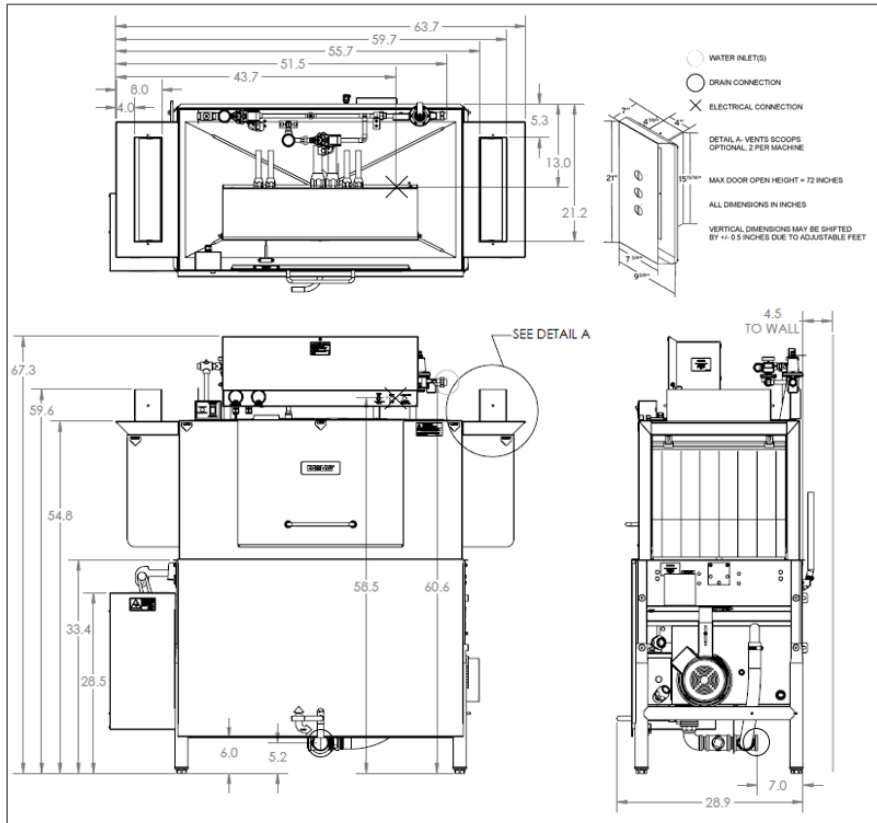
EC44-LW



LEFT TO RIGHT



RIGHT TO LEFT



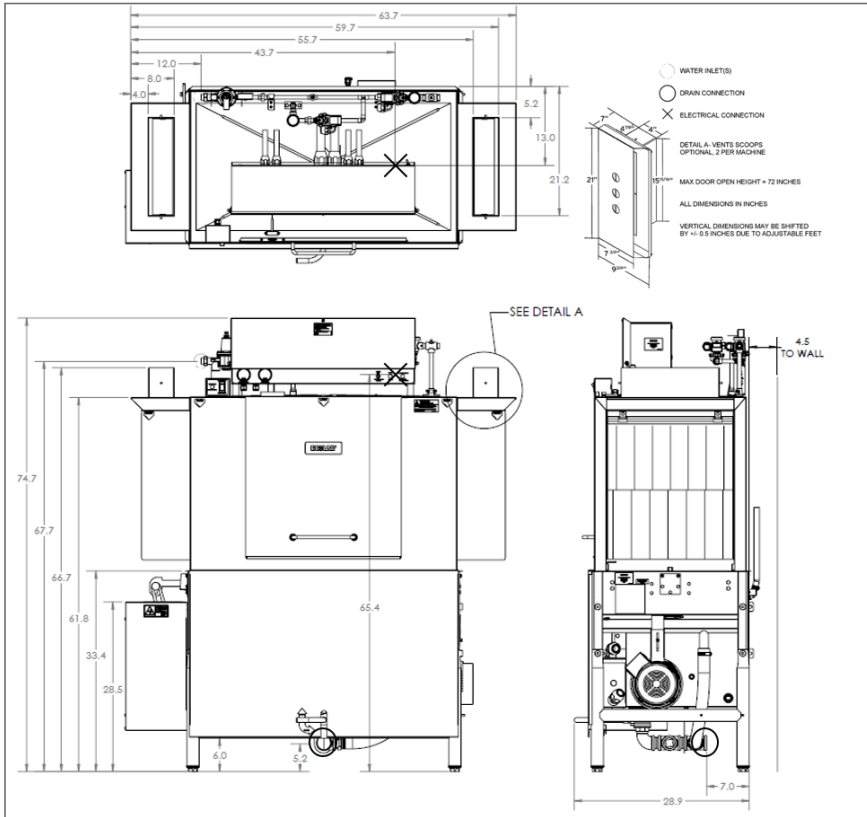
SPECIFICATIONS

OPERATING CAPACITY	
Racks per Hour	244
OPERATING TEMPERATURES	
Wash (min)	140° F
low-temp	160° F
high-temp	
Sanitizing Rinse (min)	120° F
low-temp	180° F
high-temp	
WATER CONSUMPTION	
Gallons per Rack	0.62
ELECTRICAL RATINGS	
Wash Pump	2 hp
Drive Motor	1/4 hp
WASH CHAMBER	
Internal Height	18"
WEIGHT	
Machine Weight	626 lbs
UTILITY REQUIREMENTS ELECTRICAL	
Voltage/Frequency/Phase:	208V/60Hz/3 Ph
Total Amperage	48.75 A
Minimum Electrical Circuit	60 A
Voltage/Frequency/Phase:	230V/60Hz/3 Ph
Total Amperage	44.6 A
Minimum Electrical Circuit	50 A
Voltage/Frequency/Phase:	460V/60Hz/3 Ph
Total Amperage	22.3 A
Minimum Electrical Circuit	25 A
Voltage/Frequency/Phase:	208V/60Hz/1 Ph
Total Amperage	82.65 A
Minimum Electrical Circuit	90 A
Voltage/Frequency/Phase:	230V/60Hz/1 Ph
Total Amperage	75.85 A
Minimum Electrical Circuit	80 A
WATER	
Waterline Size (min)	1/2"
Flow Pressure (required)	15-25 psi
Incoming Temp (min)	
low-temp	120° F
high-temp	180° F
Incoming Temp (recommended)	
low-temp	140° F
high-temp	180° F
DRAIN	
Drainline Size	1 1/2"
VENT HOOD	
Flow-Cubic Feet per Minute	600
CHEMICAL SANITIZER RINSE	
Minimum chlorine, ppm (low-temp)	50

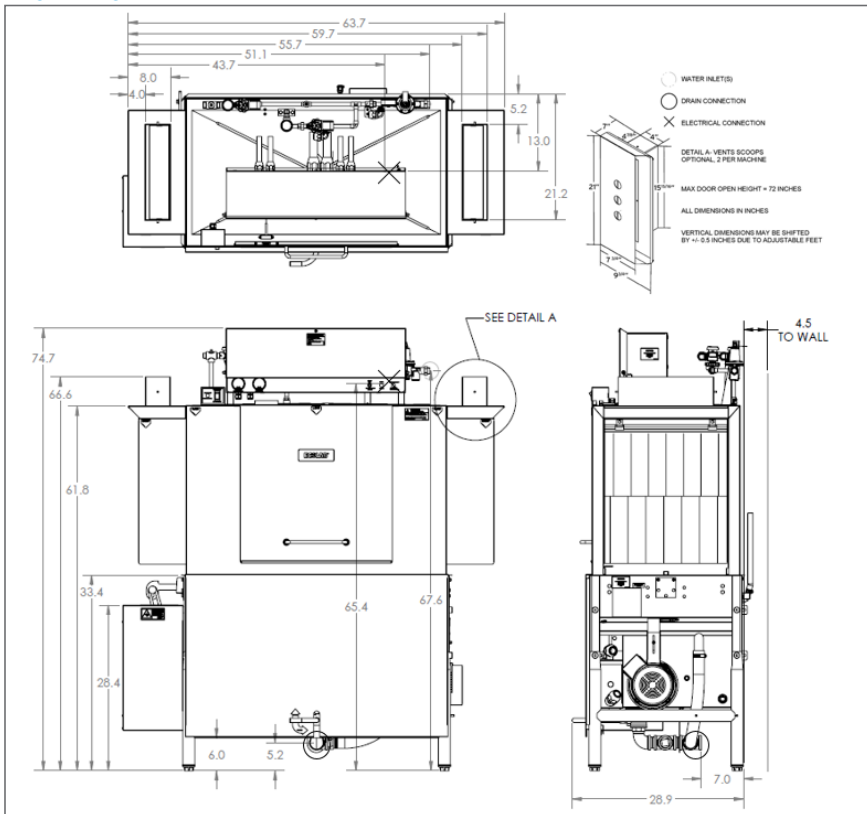
EC44HH-LW



LEFT TO RIGHT



RIGHT TO LEFT



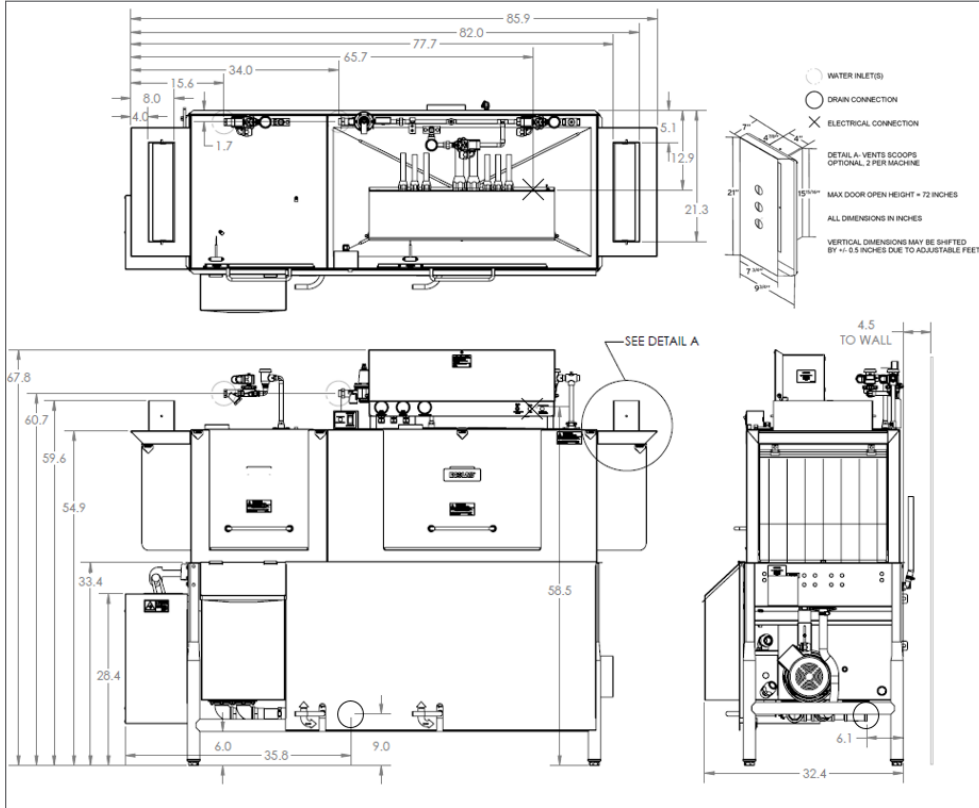
SPECIFICATIONS

OPERATING CAPACITY	
Racks per Hour	244
OPERATING TEMPERATURES	
Wash (min)	
low-temp	140° F
high-temp	160° F
Sanitizing Rinse (min)	
low-temp	120° F
high-temp	180° F
WATER CONSUMPTION	
Gallons per Rack	0.62
ELECTRICAL RATINGS	
Wash Pump	2 hp
Drive Motor	1/4 hp
WASH CHAMBER	
Internal Height	25"
WEIGHT	
Machine Weight	637 lbs
UTILITY REQUIREMENTS ELECTRICAL	
Voltage/Frequency/Phase:	
208V/60Hz/3 Ph	
Total Amperage	48.75 A
Minimum Electrical Circuit	60 A
Voltage/Frequency/Phase:	
230V/60Hz/3 Ph	
Total Amperage	44.6 A
Minimum Electrical Circuit	50 A
Voltage/Frequency/Phase:	
460V/60Hz/3 Ph	
Total Amperage	22.3 A
Minimum Electrical Circuit	25 A
Voltage/Frequency/Phase:	
208V/60Hz/1 Ph	
Total Amperage	82.65 A
Minimum Electrical Circuit	90 A
Voltage/Frequency/Phase:	
230V/60Hz/1 Ph	
Total Amperage	75.85 A
Minimum Electrical Circuit	80 A
WATER	
Waterline Size (min)	1/2"
Flow Pressure (required)	15-25 psi
Incoming Temp (min)	
low-temp	120° F
high-temp	180° F
Incoming Temp (recommended)	
low-temp	140° F
high-temp	180° F
DRAIN	
Drainline Size	1 1/2"
VENT HOOD	
Flow-Cubic Feet per Minute	600
CHEMICAL SANITIZER RINSE	
Minimum chlorine, ppm (low-temp)	50

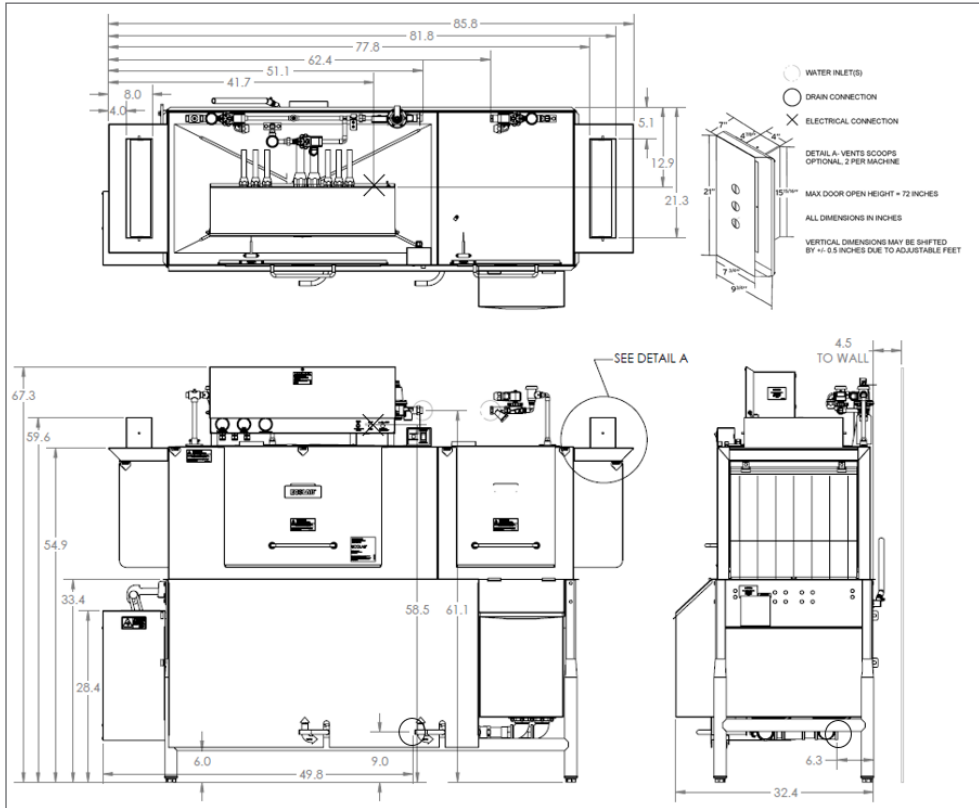
EC66-LW



LEFT TO RIGHT



RIGHT TO LEFT



SPECIFICATIONS

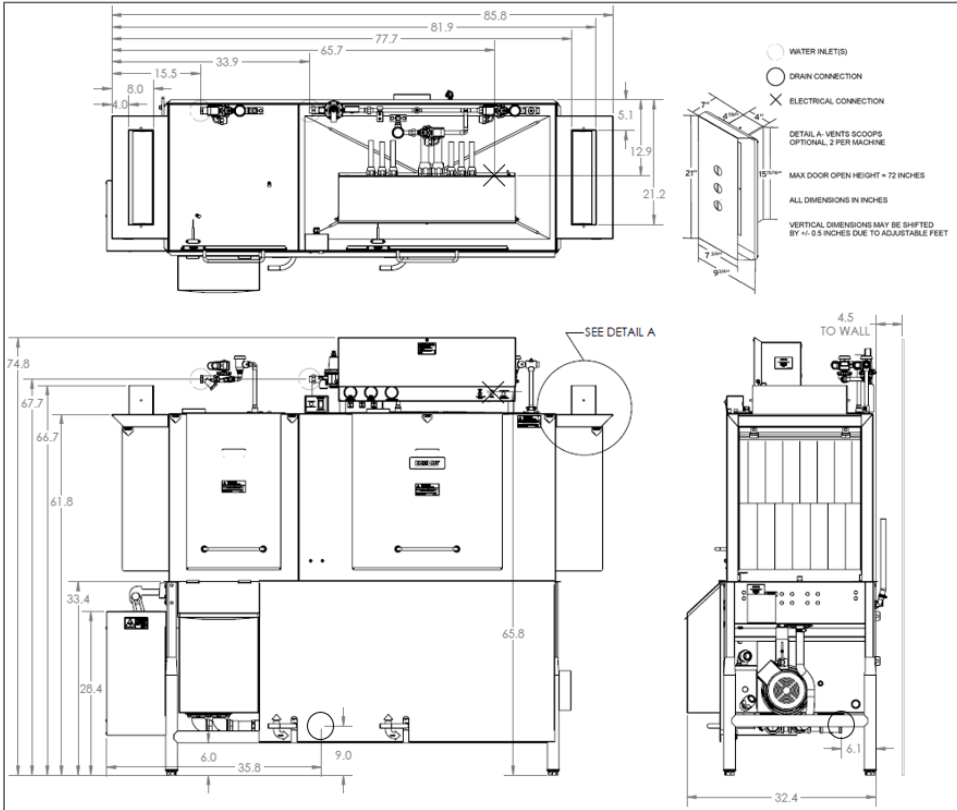
OPERATING CAPACITY	
Racks per Hour	244
OPERATING TEMPERATURES	
Wash (min)	
low-temp	140° F
high-temp	160° F
Sanitizing Rinse (min)	
low-temp	120° F
high-temp	180° F
WATER CONSUMPTION	
Gallons per Rack	0.62
ELECTRICAL RATINGS	
Wash Pump	2 hp
Pre-Wash Pump	1 hp
Drive Motor	1/4 hp
WASH CHAMBER	
Internal Height	18"
WEIGHT	
Machine Weight	872 lbs
UTILITY REQUIREMENTS ELECTRICAL	
Voltage/Frequency/Phase:	
208V/60Hz/3 Ph	
Total Amperage	52.15 A
Typical Electrical Circuit	60 A
Voltage/Frequency/Phase:	
230V/60Hz/3 Ph	
Total Amperage	48.0 A
Typical Electrical Circuit	60 A
Voltage/Frequency/Phase:	
460V/60Hz/3 Ph	
Total Amperage	24.1 A
Typical Electrical Circuit	30 A
Voltage/Frequency/Phase:	
208V/60Hz/1 Ph	
Total Amperage	88.65 A
Typical Electrical Circuit	100 A
Voltage/Frequency/Phase:	
230V/60Hz/1 Ph	
Total Amperage	81.85 A
Typical Electrical Circuit	90 A
WATER	
Waterline Size (min)	1/2"
Flow Pressure (required)	15-25 psi
Incoming Temp (min)	
low-temp	120° F
high-temp	180° F
Incoming Temp (recommended)	
low-temp	140° F
high-temp	180° F
DRAIN	
Drainline Size	1 1/2"
VENT HOOD	
Flow-Cubic Feet per Minute	600
CHEMICAL SANITIZER RINSE	
Minimum chlorine, ppm (low-temp)	50

EC66HH-LW

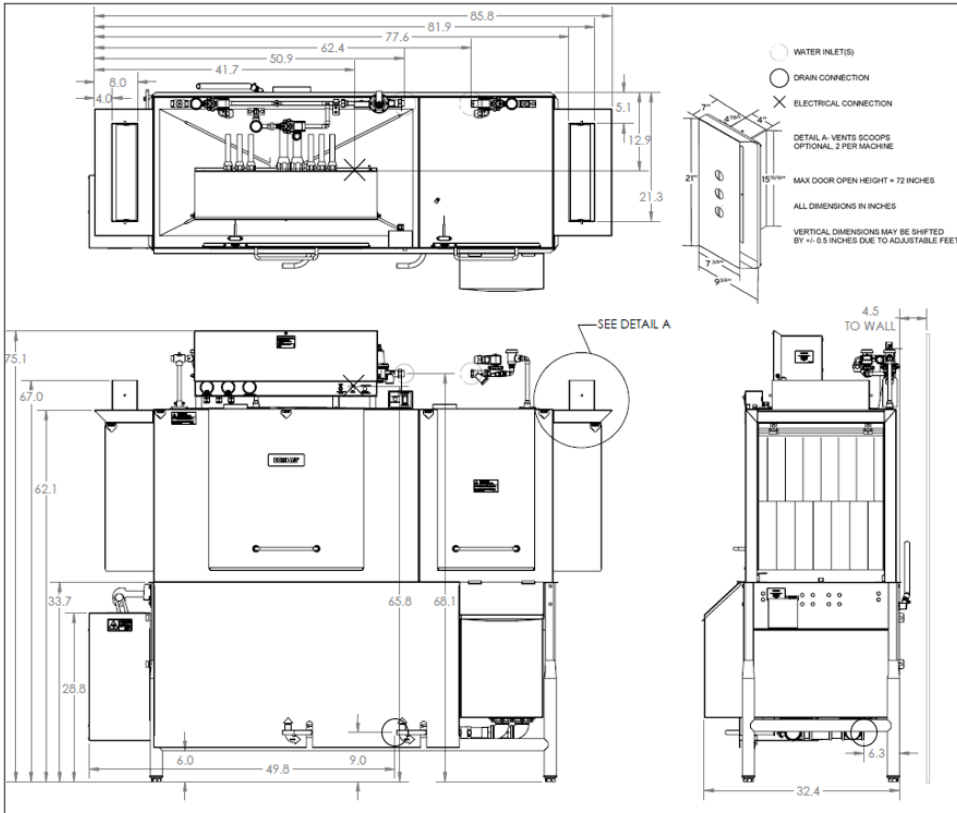


SPECIFICATIONS

LEFT TO RIGHT



RIGHT TO LEFT



OPERATING CAPACITY

Racks per Hour	244
----------------	-----

OPERATING TEMPERATURES

Wash (min)	
low-temp	140° F
high-temp	160° F

Sanitizing Rinse (min)	
low-temp	120° F
high-temp	180° F

WATER CONSUMPTION

Gallons per Rack	0.62
------------------	------

ELECTRICAL RATINGS

Wash Pump	2 hp
Pre-Wash Pump	1 hp
Drive Motor	1/4 hp

WASH CHAMBER

Internal Height	25"
-----------------	-----

WEIGHT

Machine Weight	888 lbs
----------------	---------

UTILITY REQUIREMENTS ELECTRICAL

Voltage/Frequency/Phase:	208V/60Hz/3 Ph
Total Amperage	52.15 A
Typical Electrical Circuit	60 A

Voltage/Frequency/Phase:	230V/60Hz/3 Ph
Total Amperage	48.0 A
Typical Electrical Circuit	60 A

Voltage/Frequency/Phase:	460V/60Hz/3 Ph
Total Amperage	24.1 A
Typical Electrical Circuit	30 A

Voltage/Frequency/Phase:	208V/60Hz/1 Ph
Total Amperage	88.65 A
Typical Electrical Circuit	100 A

Voltage/Frequency/Phase:	230V/60Hz/1 Ph
Total Amperage	81.85 A
Typical Electrical Circuit	90 A

WATER

Waterline Size (min)	1/2"
Flow Pressure (required)	15-25 psi
Incoming Temp (min)	
low-temp	120° F
high-temp	180° F
Incoming Temp (recommended)	
low-temp	140° F
high-temp	180° F

DRAIN

Drainline Size	1 1/2"
----------------	--------

VENT HOOD

Flow-Cubic Feet per Minute	600
----------------------------	-----

CHEMICAL SANITIZER RINSE

Minimum chlorine, ppm (low-temp)	50
----------------------------------	----