



TAKE CONTROL WITH THE
FIRST ALL-SOLID, LOW-TEMP
WAREWASHING SYSTEM

SMARTPOWER TSC Double

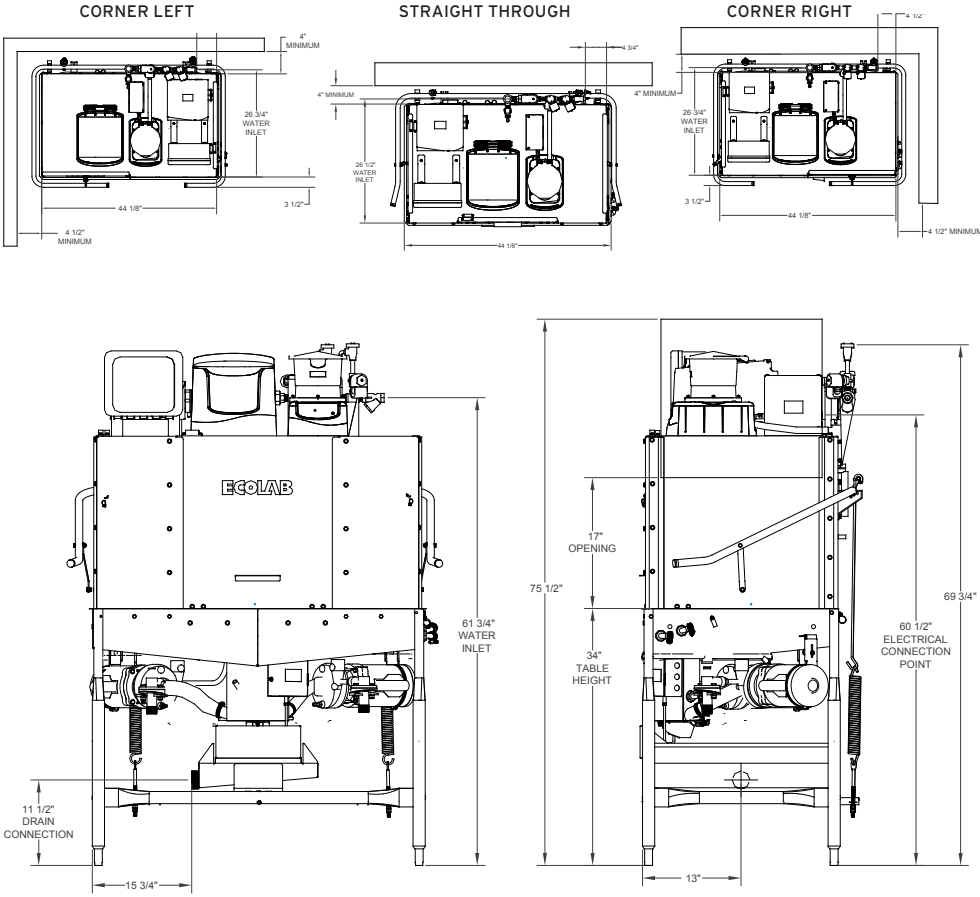
- ▲ Integrated SMARTPOWER system tracks operational efficiency.
- ▲ Solid SMARTPOWER TSC products deliver unsurpassed cleaning results and greater convenience.
- ▲ Energy Star® rating helps reduce operating costs.

.....
Renting a dishmachine from Ecolab allows you to focus on your business with the security of knowing your warewashing operation is properly managed.
.....



ECOLAB DISHMACHINE RENTAL PROGRAM

The highest level of clean backed by service you can trust.



SMARTPOWER TSC DOUBLE SPECIFICATIONS

OPERATING CAPACITY	
Racks per Hour (NSF rating)	78
OPERATING CYCLE (SECONDS) NORMAL	
Wash Time	53
Dwell Time	20
Rinse Time	14
Load Time	5
Total Cycle Time	92
OPERATING CYCLE (SECONDS) HEAVY	
Wash Time	118
Dwell Time	17
Rinse Time	15
Load Time	5
Total Cycle Time	155
OPERATING CYCLE (SECONDS) SUPER HEAVY	
Wash Time	208
Dwell Time	17
Rinse Time	15
Load Time	5
Total Cycle Time	245
OPERATING TEMPERATURES	
Wash (minimum)	120°F
Sanitizing Rinse (minimum)	120°F
WATER CONSUMPTION	
Gallons per Rack	1.17
ELECTRICAL RATINGS	
Wash Pump Motor, Horsepower	3/4 hp
WASH CHAMBER	
Height	17"
WEIGHT	
Machine Weight	365 lb
Shipping Weight	400 lb
UTILITY REQUIREMENTS, ELECTRICAL	
Voltage	115V
Frequency	60Hz
Phase	1 ph
Total Amperage	23 A
Minimum Electrical Circuit	30 A
WATER	
Flow (minimum), gal/hour at 100% capacity	60
Waterline Size (minimum)	1/2"
Flow Pressure (recommended)	15-25 psi
Incoming Temperature (minimum)	120°F
Incoming Temperature (recommended)	140°F
DRAIN	
Flow (minimum), gal/min	1
Drainline Size (minimum)	2"

PRODUCTS FOR USE IN THE SMARTPOWER TSC MACHINE



**SMARTPOWER™
Dishmachine
Detergent**
6101201 4-6.75 lb
6101202 6-6.75 lb



**SMARTPOWER Rinse
Additive All Purpose**
6101203 2-2.5 lb



**SMARTPOWER
Dishmachine
Detergent Heavy
Duty**
6101200 4-6.75 lb



**SMARTPOWER Rinse
Additive Heavy Duty**
6101199 2-2.5 lb



**SMARTPOWER
Dishmachine
Detergent Specialty**
6101308 4-6.75 lb



**SMARTPOWER
Dishmachine
Sanitizer (US)**
6101357 4-1,000
pellet
pouches

EPA registered

